

# RETHINK COALITION

prepared by:



RUNDELL ERNSTBERGER ASSOCIATES

[www.reasite.com](http://www.reasite.com)

May 11, 2023

PART 1

An aerial, grayscale view of the Indianapolis city grid. The image shows a dense network of streets, a major highway interchange in the lower right, and a winding river in the upper left. The overall tone is dark and monochromatic.

# INDIANAPOLIS INNER LOOP

SYSTEM COMPARISON - EXISTING VS. RETHINK'S RECESSED CONCEPT



# VISIONARY STUDY ADVISORY COUNCIL

- Office of Governor Holcomb
- Indiana Department of Transportation
- City of Indianapolis
- Indianapolis Metropolitan Planning Organization
- City of Indianapolis Department of Public Works
- Indianapolis Public Schools
- Eli Lilly & Co.
- IU Health
- IUPUI
- University of Indianapolis
- Indianapolis Motor Speedway
- Indy Chamber
- Indianapolis Capital Improvement Board
- Indianapolis Urban League
- Central Indiana Community Foundation
- Indiana Landmarks
- Downtown Indy, Inc.
- Develop Indy
- 16 Tech
- Historic Urban Neighborhoods of Indianapolis
- Ransom Place Neighborhood
- Bates-Hendricks Neighborhood Association
- South Indy Quality of Life Plan
- Young & Laramore
- Storrow Kinsella Associates
- Rundell Ernstberger Associates
- Schmidt Associates
- Taft Law



# RETHINK COALITION TIMELINE

01

## NORTH SPLIT RESPONSE

Rethink 65/70 Coalition formed as a grassroots group in response to INDOT's release of preliminary plans to rebuild the North Split. Rethink Coalition embarks on an advocacy and communications effort to broaden public awareness of the impacts of INDOT's proposed plans and best practice examples from cities around the U.S. facing similar interstate rebuild challenges.

2017

## AN ALTERNATIVE VISION

Rethink Coalition continues to advance a new vision for the entire downtown inner loop that balances costs, transportation, and safety with inclusive economic development, connectivity, and quality of life considerations; funding and preparation of an economic impact study that outlines the significant economic and social benefits for a recessed highway concept; and leading a community-wide effort to convince INDOT to modify their proposed North Split Plans to eliminate additional through lanes, reduce the use of retaining walls, increase local connectivity and mobility, and reduce the overall interchange footprint.

2018

02

03

## LILLY ENDOWMENT GRANT

Rethink Coalition commences coordination with INDOT to review and offer feedback on proposed North Split plans; advances the vision for the overall downtown inner loop system; and procures funding for the preparation of the Inner Loop Visionary Study through Lilly Endowment.

2019

## INNER LOOP VISIONARY STUDY

In partnership with the Indy Chamber, Rethink engages global engineering and transportation planning firm, Arup, to prepare the Inner Loop Visionary Study, a comparative analysis of the rebuild-as-is and recessed highway alternatives. The findings of the year-long study demonstrated the significantly higher ROI generated by the recessed concept when compared to the rebuild as-is option, adding value through connectivity, capacity for multiple modes of transportation, enhanced safety for downtown motorists and pedestrians, new equitable development opportunities, and reduced noise and air pollution.

2020

04

05

## FORMAL ORGANIZATION

Rethink Coalition, Inc. officially organized as a nonprofit and begins community-wide engagement and education addressing future Inner Loop reconstruction and its impact on central Indiana based on the Inner Loop Visionary Study.

2021

## ADVANCING THE VISION

Rethink advances discussions with state and local policymakers and community leaders on a more comprehensive vision for the inner loop; continues coordination with INDOT on issues impacting local neighborhoods surrounding the North Split project; organizes southeast neighborhoods and stakeholders in response to INDOT's I-65 Safety and Efficiency project; and submits a Reconnecting Communities Grant to the USDOT for planning related to the southeast leg of the inner loop in partnership with the City and INDOT.

2022

06





**1976 THE "INNER LOOP" IS COMPLETED**

**EXISTING INNER LOOP SYSTEM**  
looking northwest





**FOR DECADES, THE HIGHWAYS HAVE ACTED AS A BARRIER BETWEEN NEIGHBORHOODS**





An aerial photograph of a city, likely Chicago, showing a dense urban landscape. A prominent red outline highlights the 'inner loop' system, which consists of several major roads forming a roughly rectangular shape with some internal connections. The red outline is thick and has a white border. A speech bubble points to the red outline with the text: "50 YEARS LATER, THE INNER LOOP REMAINS A PHYSICAL BARRIER FRAGMENTING THE CITY'S LANDSCAPE AND IMPACTING QUALITY OF LIFE".

**50 YEARS LATER, THE INNER LOOP REMAINS A PHYSICAL BARRIER FRAGMENTING THE CITY'S LANDSCAPE AND IMPACTING QUALITY OF LIFE**

**EXISTING INNER LOOP SYSTEM**  
looking northwest






**WITHIN A 1/4 MILE OF THE HIGHWAYS, THE  
IMPACT IS UNMISTAKABLE. ABANDONED  
AND UNDERUTILIZED LAND IS ABUNDANT.**

**EXISTING INNER LOOP SYSTEM**  
looking northwest



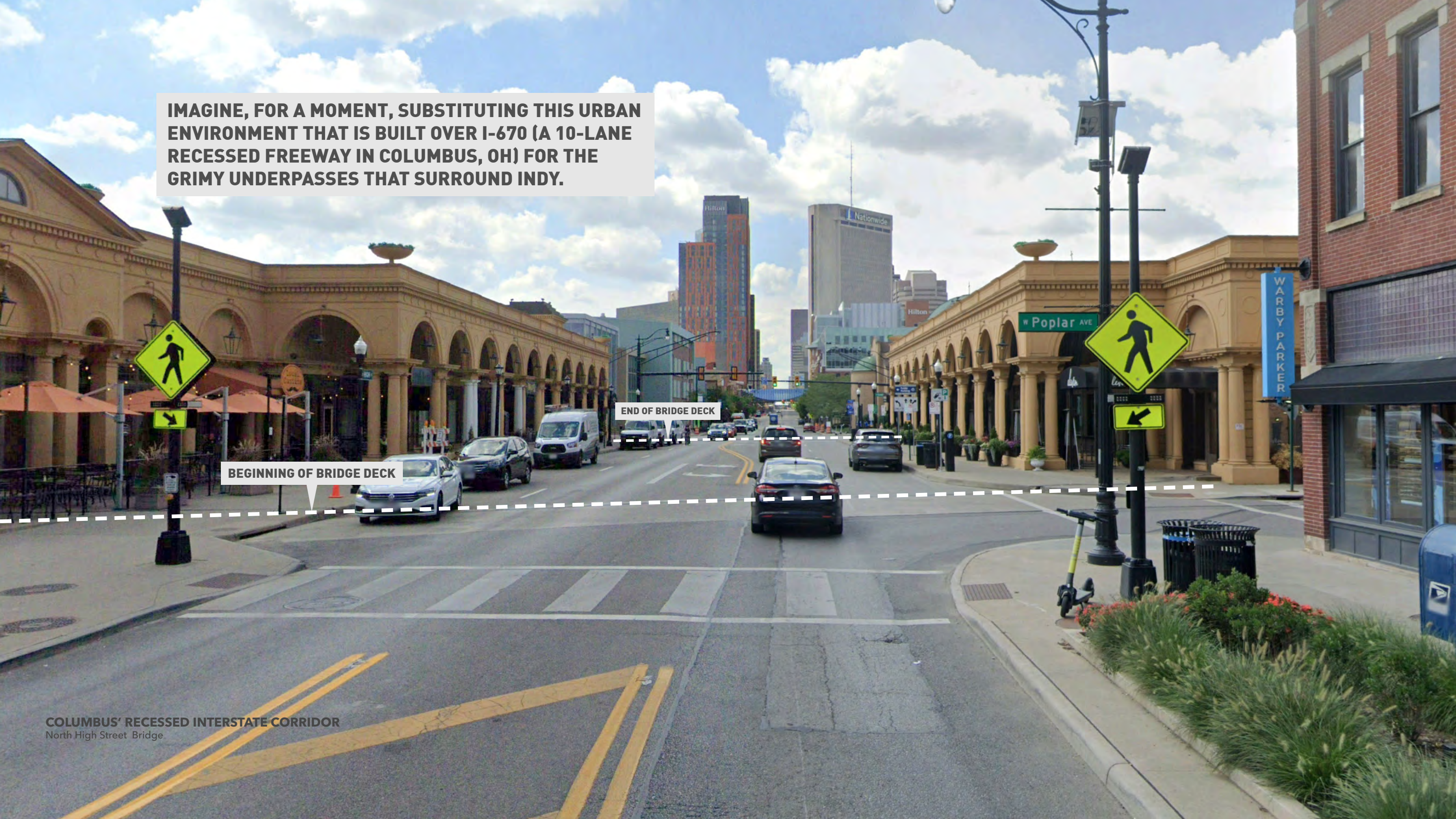


**RECESSING THE LOOP AND COMPRESSING ITS FOOT-PRINT IS A FEASIBLE APPROACH TO MITIGATING ITS MOST HARMFUL IMPACTS. MANY OTHER CITIES HAVE SUCCESSFULLY USED THIS STRATEGY.**

**RECESSED INNER LOOP SYSTEM**  
looking northwest



**IMAGINE, FOR A MOMENT, SUBSTITUTING THIS URBAN ENVIRONMENT THAT IS BUILT OVER I-670 (A 10-LANE RECESSED FREEWAY IN COLUMBUS, OH) FOR THE GRIMY UNDERPASSES THAT SURROUND INDY.**



**END OF BRIDGE DECK**

**BEGINNING OF BRIDGE DECK**



**CAN YOU FEEL THE DIFFERENCE?**



**COLUMBUS/INDY MASH-UP**  
Columbus' I-670 Corridor + Indy's I-70 Corridor



**OR THESE BEAUTIFUL PARKS THAT ARE BUILT OVER I-93 IN BOSTON. CAN YOU IMAGINE LIVING HERE?**



**BOSTON'S CAPPED INTERSTATE CORRIDOR**  
Hanover Street Bridge



HOW ABOUT HERE?



**BOSTON/INDY MASH-UP**  
Boston's I-93 Corridor + Indy's I-65/I-70 Corridor



**IMAGINE WALKING HERE.**

**KLYDE WARREN CAP PARK**

**DALLAS' RECESSED WOODALL ROGERS FREEWAY**  
Olive Street Bridge





**NOW, IMAGINE WALKING HERE.**





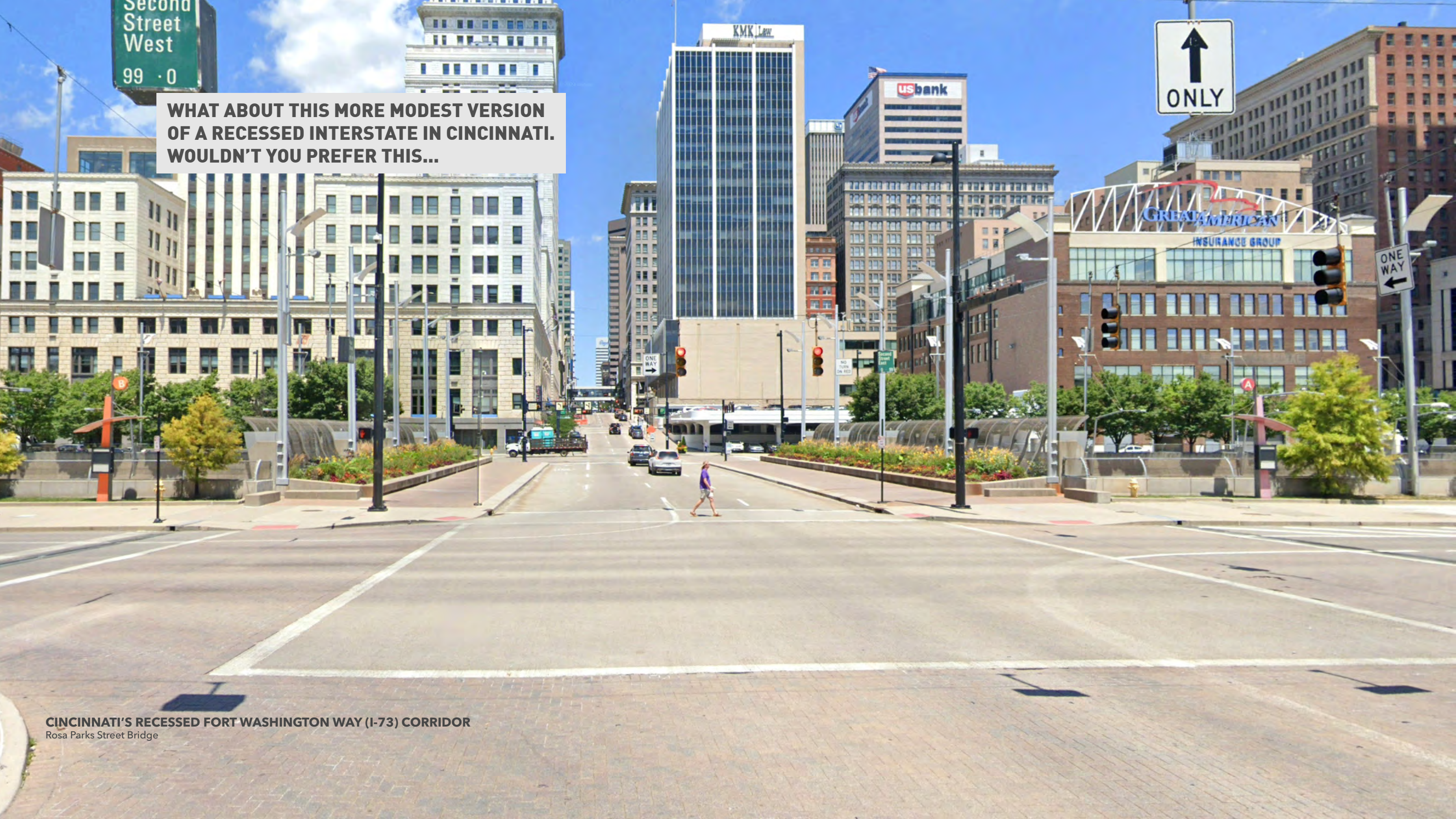
Second Street West  
99 · 0

**WHAT ABOUT THIS MORE MODEST VERSION OF A RECESSED INTERSTATE IN CINCINNATI. WOULDN'T YOU PREFER THIS...**

↑  
ONLY

ONE WAY  
←

**CINCINNATI'S RECESSED FORT WASHINGTON WAY (I-73) CORRIDOR**  
Rosa Parks Street Bridge





Second Street West  
99 · 0

OVER THIS?

↑  
ONLY

ups

Premier

12th St

**CINCINNATI/INDY MASH-UP**  
Cincinnati's I-71 Corridor + Indy's I-65 Corridor





**INDY'S SOUTH SPLIT**  
Bates Street Bridge





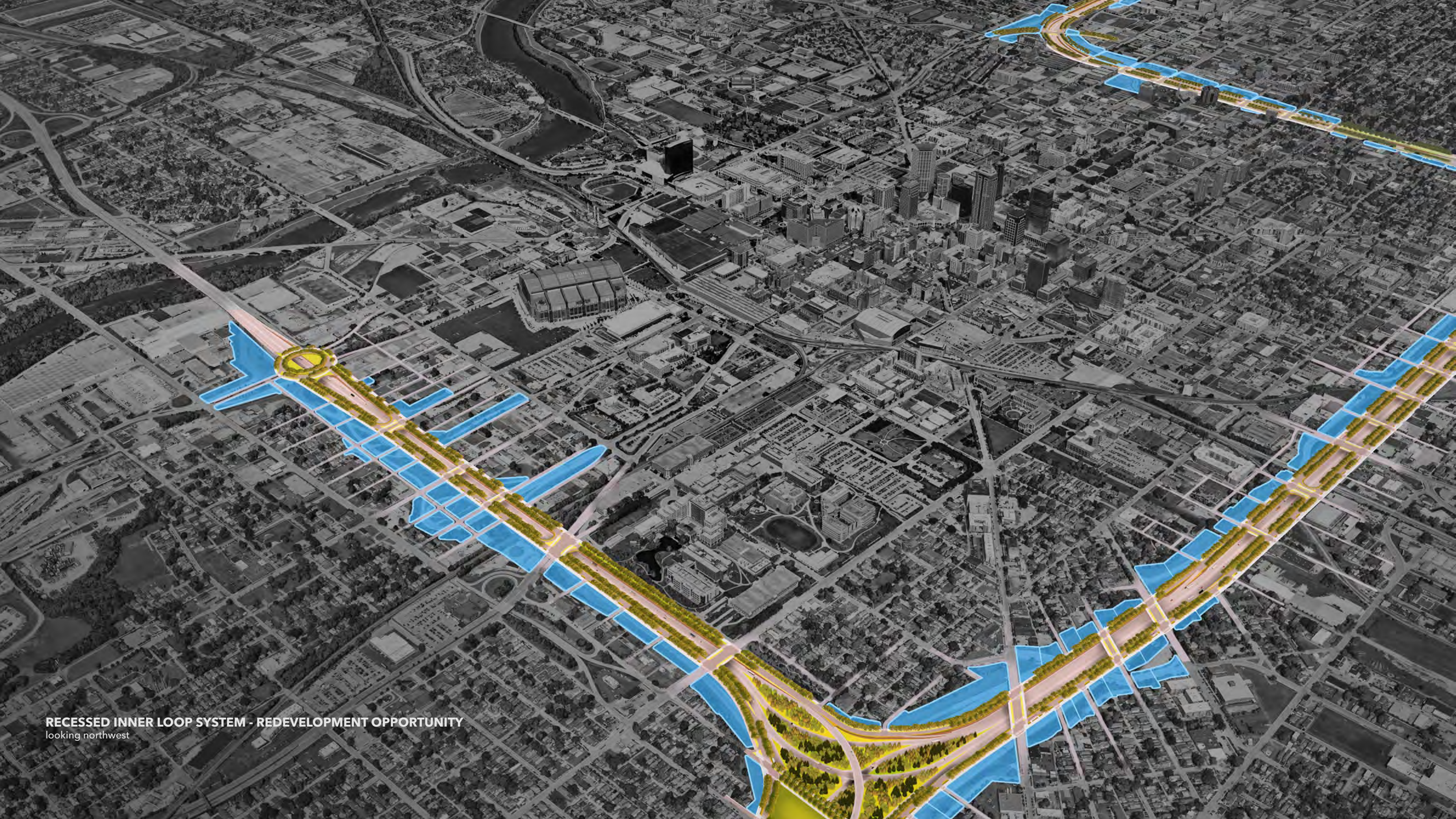
DALLAS/INDY MASH-UP  
Dallas/Woodall Rogers Freeway Corridor + Indy's South Split





**RECESSED INNER LOOP SYSTEM**  
looking northwest





**RECESSED INNER LOOP SYSTEM - REDEVELOPMENT OPPORTUNITY**  
looking northwest



**INNER LOOP REDEVELOPMENT OPPORTUNITY**

**102 ACRES**



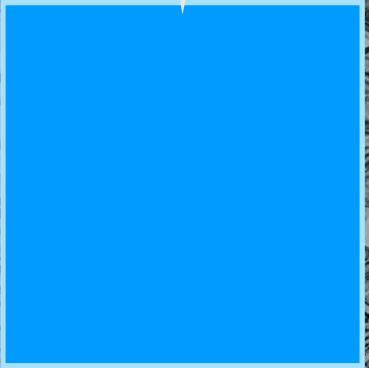
**GM STAMPING PLANT SITE**

**12 ACRES**



**BOTTLEWORKS**

**89 ACRES**



**66 ACRES**



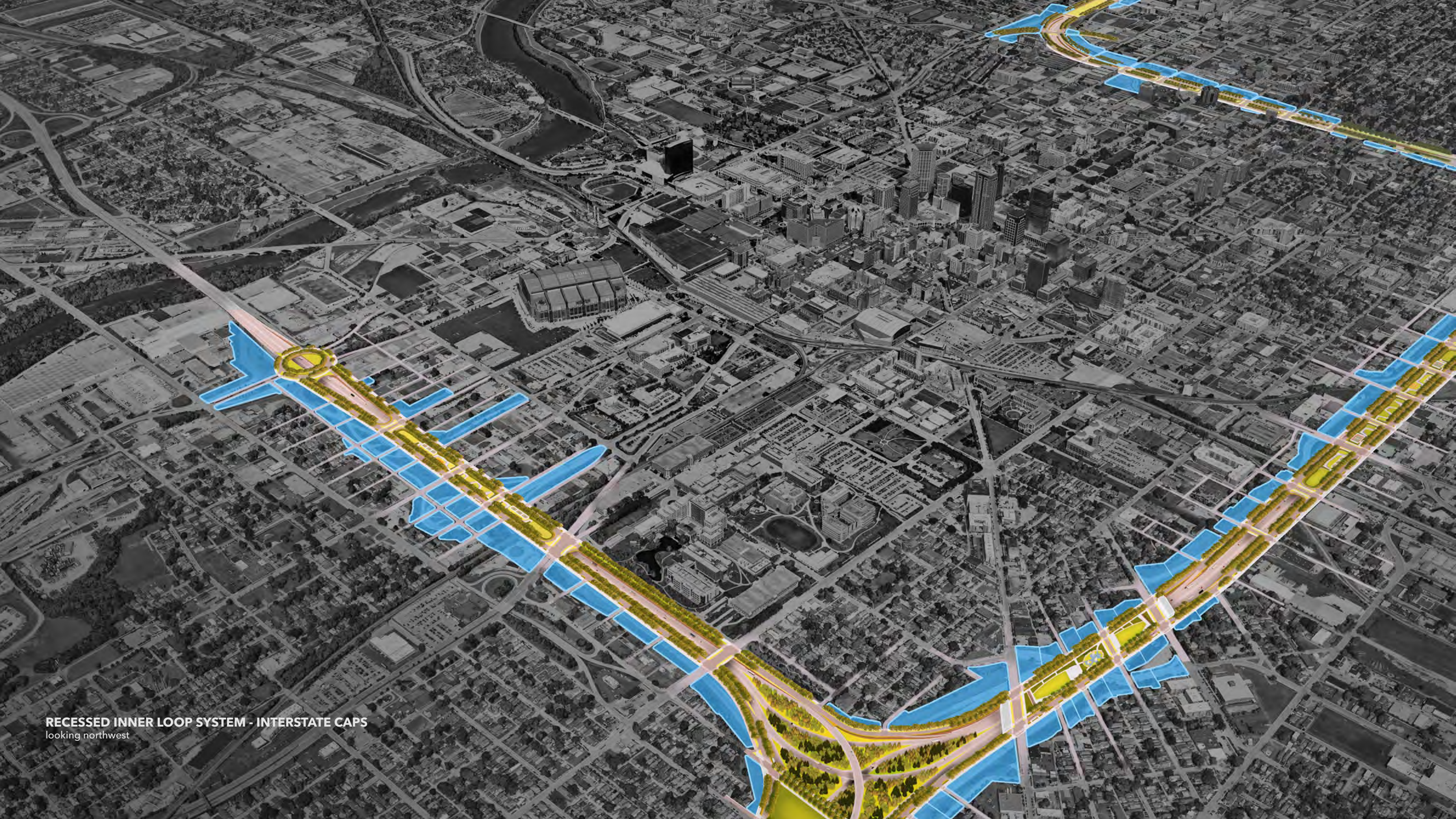
**16 TECH**

**18 ACRES**



**CITYWAY**





**RECESSED INNER LOOP SYSTEM - INTERSTATE CAPS**  
looking northwest





**RECESSED INNER LOOP SYSTEM - REDEVELOPMENT**  
looking northwest





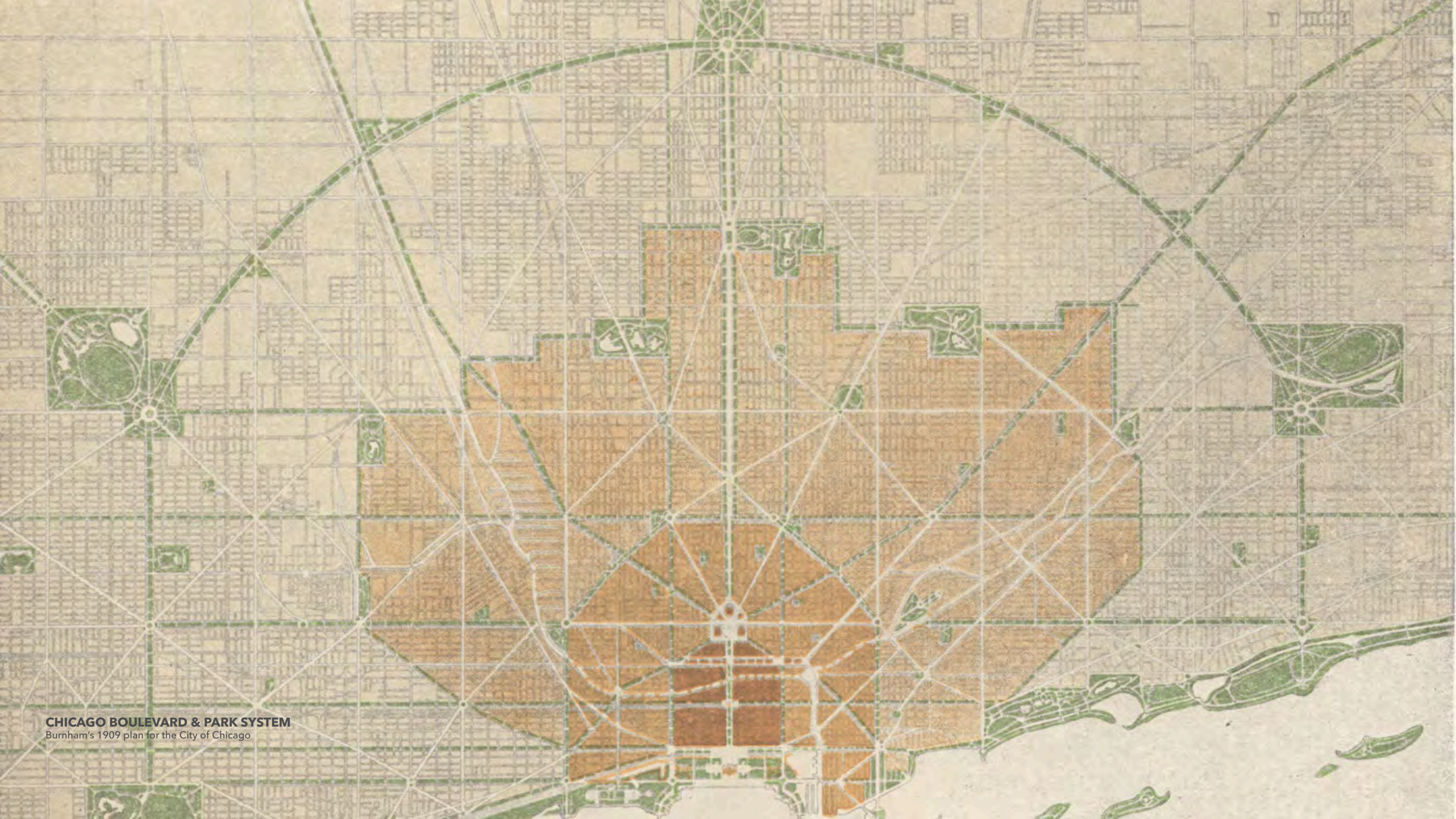
**RECESSED INNER LOOP SYSTEM - BUILDING ON EXISTING ASSETS**  
looking northwest





**A GRAND BOULEVARD, PARK, & TRAIL SYSTEM FOR THE CITY OF INDIANAPOLIS**  
looking northwest








**CHICAGO BOULEVARD & PARK SYSTEM**  
Burnham's 1909 plan for the City of Chicago





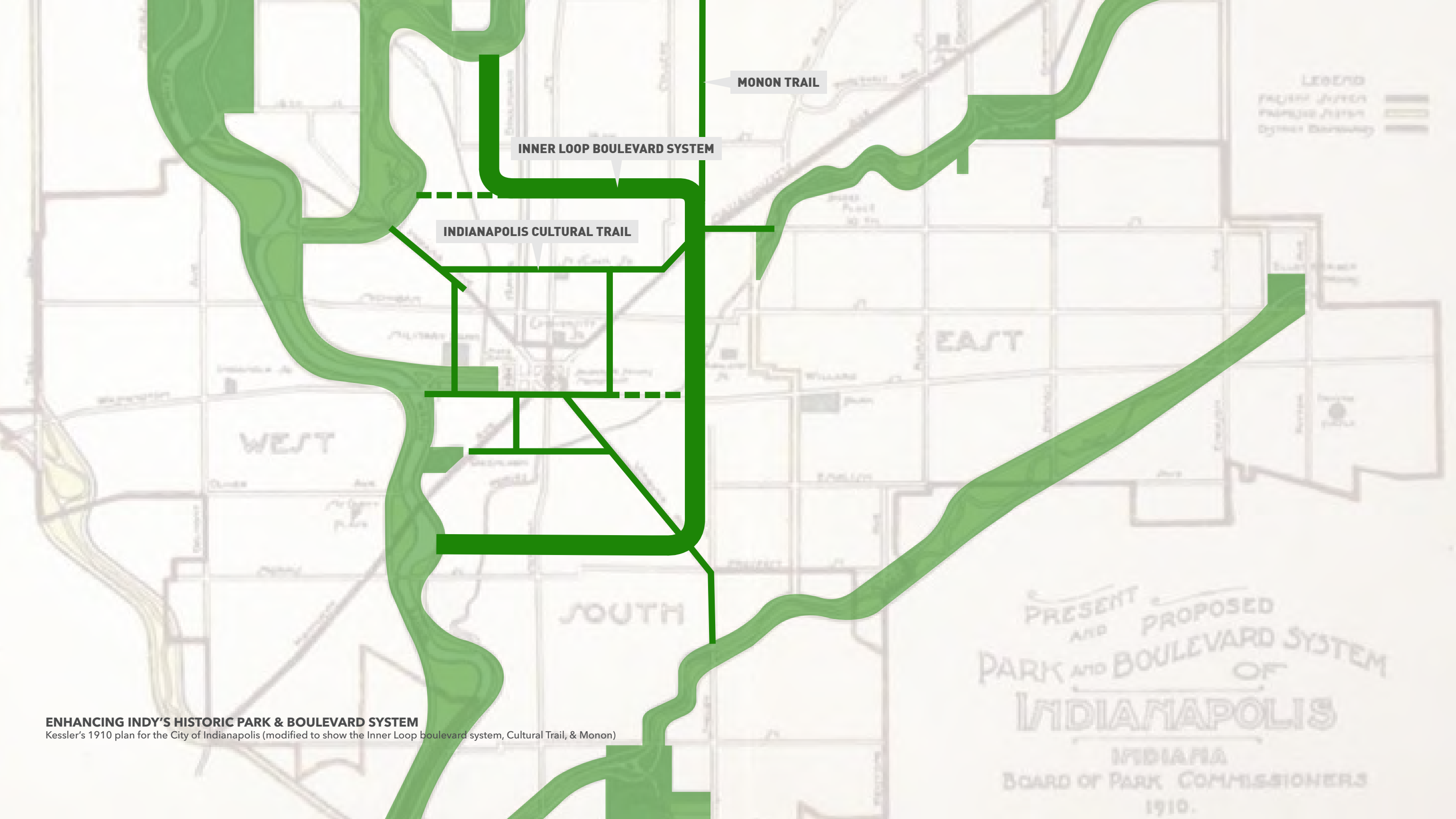
**LEGEND**  
 Present Parks   
 Proposed Parks   
 System Boundary 

PRESENT  
 AND  
 PROPOSED  
 PARK AND BOULEVARD SYSTEM  
 OF  
**INDIANAPOLIS**

INDIANA  
 BOARD OF PARK COMMISSIONERS  
 1910.

**INDY'S HISTORIC PARK & BOULEVARD SYSTEM**  
 Kessler's 1910 plan for the City of Indianapolis





LEGEND  
 Present System  
 Proposed System  
 Dycker & Wideman

MONON TRAIL

INNER LOOP BOULEVARD SYSTEM

INDIANAPOLIS CULTURAL TRAIL

PRESENT AND PROPOSED  
 PARK AND BOULEVARD SYSTEM  
 OF  
 INDIANAPOLIS

INDIANA  
 BOARD OF PARK COMMISSIONERS  
 1910.

**ENHANCING INDY'S HISTORIC PARK & BOULEVARD SYSTEM**  
 Kessler's 1910 plan for the City of Indianapolis (modified to show the Inner Loop boulevard system, Cultural Trail, & Monon)



An aerial, grayscale photograph of a city street grid. A major highway interchange is visible in the lower right quadrant, featuring a large circular interchange and several overpasses. The text is overlaid on the center of the image.

# **SOUTH LEG (I-70)**

**SYSTEM COMPARISON - EXISTING VS. RETHINK'S RECESSED CONCEPT**





I-70

MCCARTY ST

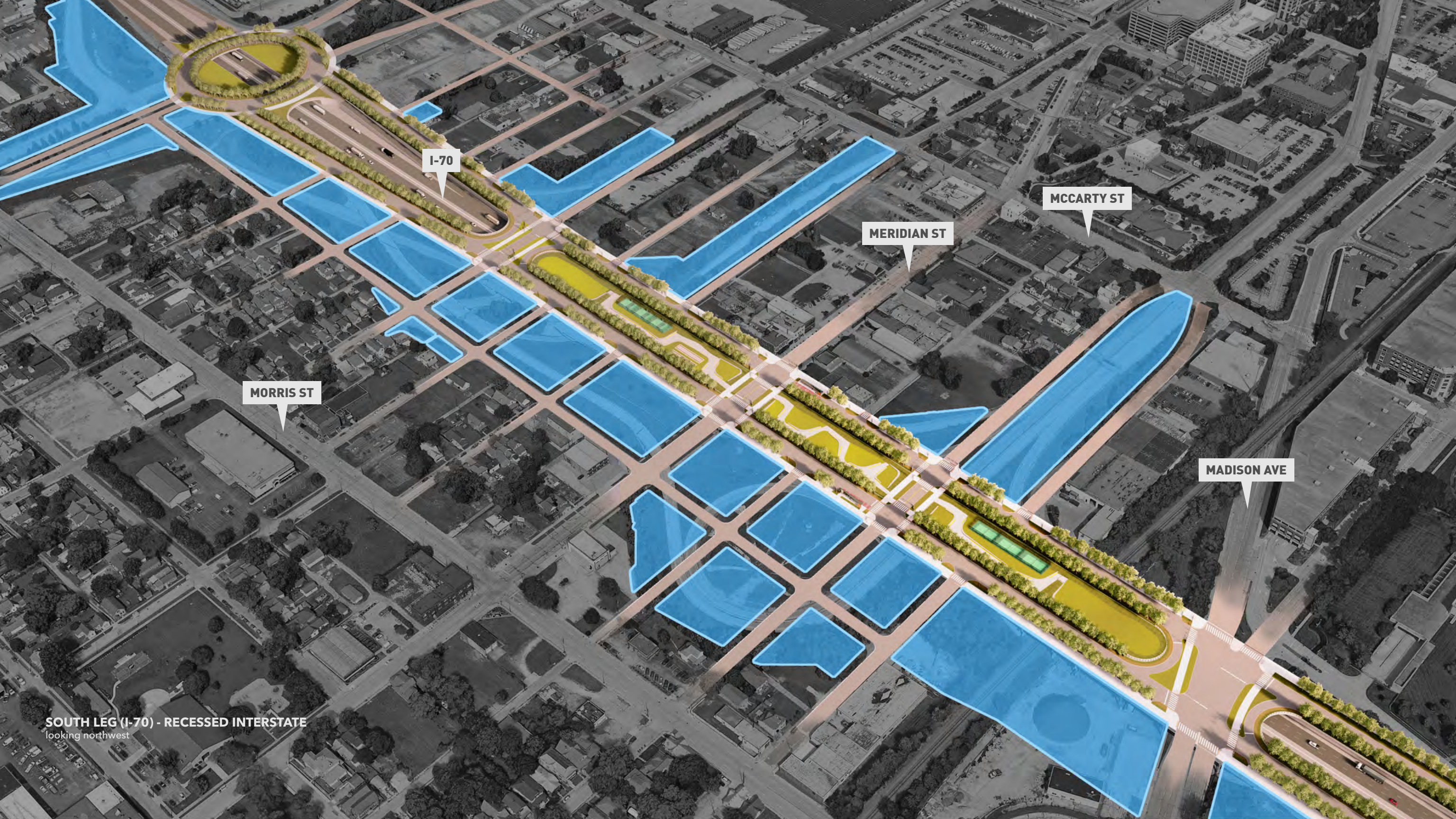
MERIDIAN ST

MORRIS ST

MADISON AVE

SOUTH LEG (I-70) - EXISTING  
looking northwest





I-70

MCCARTY ST

MERIDIAN ST

MORRIS ST

MADISON AVE

**SOUTH LEG (I-70) - RECESSED INTERSTATE**  
looking northwest





I-70

MCCARTY ST

MERIDIAN ST

MORRIS ST

MADISON AVE

**SOUTH LEG (I-70) - REDEVELOPMENT**  
looking northwest

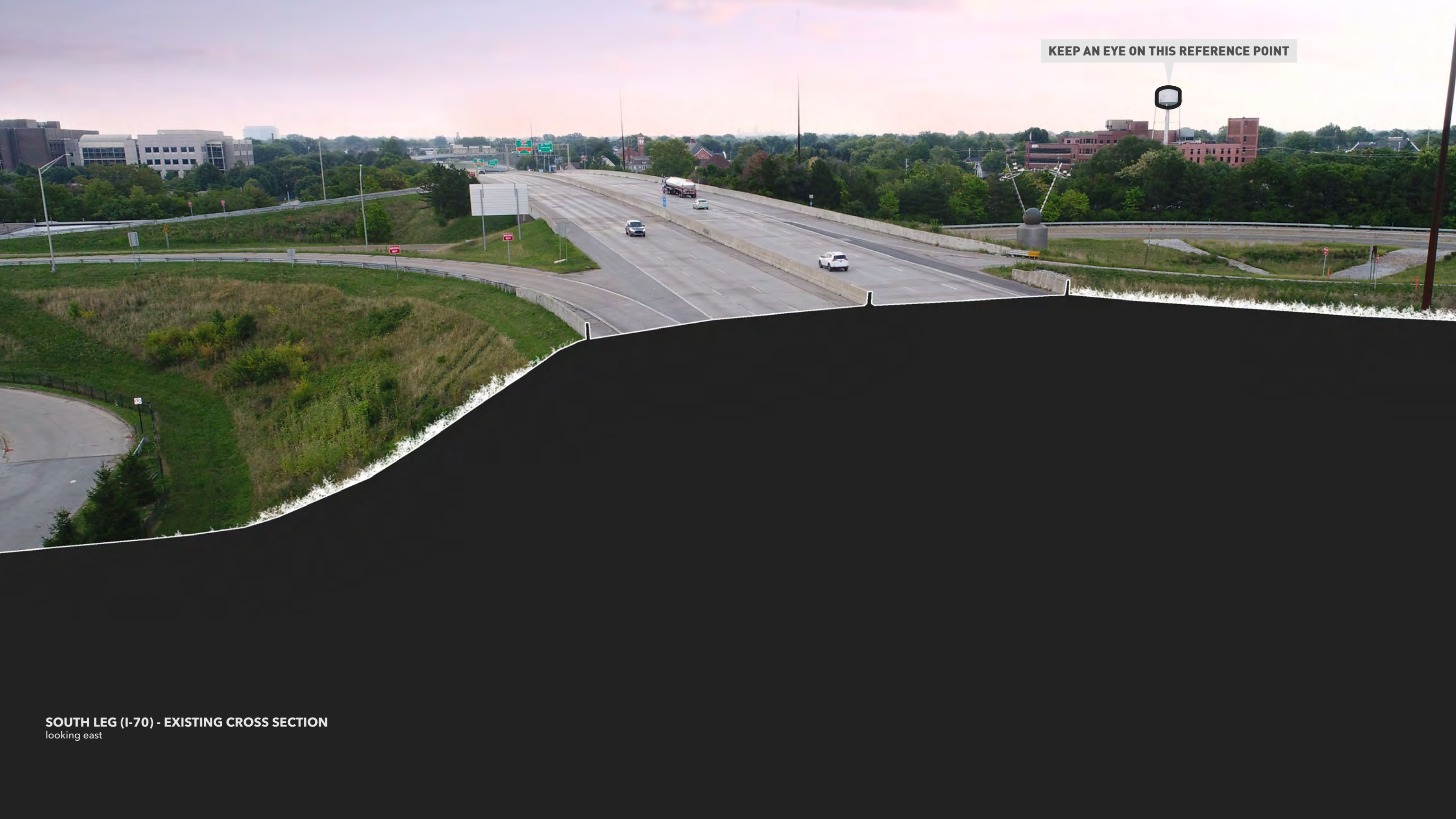




**EXISTING I-70 (08/2022)**  
looking east toward south split



KEEP AN EYE ON THIS REFERENCE POINT



**SOUTH LEG (I-70) - EXISTING CROSS SECTION**  
looking east



KEEP AN EYE ON THIS REFERENCE POINT



**SOUTH LEG (I-70) - EXISTING VS. PROPOSED CROSS SECTION**  
looking east



KEEP AN EYE ON THIS REFERENCE POINT



**SOUTH LEG (I-70) - PROPOSED CROSS SECTION**  
looking east









**EXISTING I-70 (08/2022)**  
looking east toward south split